



Commercial
Vehicles

The new Caddy



Experts in every field.

The new Caddy and Caddy Maxi.

Building on a legacy of award-winning vans, the Caddy has long been a benchmark in its class. And with the launch of the new Caddy, we've made it even more functional, flexible and versatile than its predecessors. Whether you decide to choose a new Caddy or Caddy Maxi, or the new Caddy Maxi Kombi, every model offers countless innovations and, of course, everything you'll ever need to not only assist you in your work, but to convey the best possible professional image to your customers.

NEW GENERATION OF ENGINES

with our highly economical
Euro 5 engine line-up.



HIGH LOAD CAPACITY

with the ability to carry
up to **735kg** in the new
Caddy panel van.



FUNCTIONALITY AND FLEXIBILITY

with the new Caddy Maxi
Kombi featuring folding,
double-folding and
removeable seats as well
as a wide side sliding door.



EXCELLENT FUEL CONSUMPTION

with a combined cycle figure
of up to **4.3 l/100km** and CO₂
emissions as low as **114g/km**
for the Caddy BlueMotion panel van.



NEW ASSISTANCE SYSTEMS FOR THE DRIVER

including Park Assist,
Light Assist, Brake Assist
and our Driver Alert System.



VERSATILE STORAGE SYSTEMS

with lots of clever
storage possibilities
throughout the interior.



SAFETY STANDARDS LEADING THE WAY

means that the new Caddy
includes driver and passenger
front seat and side curtain
airbags as standard.



PROVEN VOLKSWAGEN QUALITY GIVES YOU PEACE-OF-MIND

as we only use the most durable materials and deliver
the highest-quality workmanship.



Doc

Bolder. Sharper. Newer.

The new design.

The new Caddy exudes the highest levels of competence and dependability. It's focused in every way – no more so than through its dynamic exterior styling. While the front delivers a bolder new stance, the rear features sharper design and elegantly sculptured rear light clusters.

Additional highlights include the new chrome strip on the radiator grille, stylish new side indicators and a new range of alloy wheels.



More quality. More function.
More convenience.

The new interior.

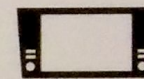
The new Caddy has been thoroughly enhanced – both outside and inside. A completely new car-like dashboard with a super high-quality finish awaits you in the cab. To assist your working day you'll discover plenty of ingenious stowage solutions, ergonomic seating, improved interior acoustics and a broad selection of radio and infotainment systems – including Bluetooth® as standard. With front seat occupants benefitting from electric heated and adjustable wing mirrors, electric windows and front and curtain airbags as standard, it's a convenient and safe place to spend your day. Add these ingredients together and the new Caddy's interior moves to a whole new level and sets the standard in the light commercial vehicle category.





The new radio and infotainment systems.

Radio and navigation. The latest-generation devices are available with the new Caddy, including the Composition Colour and Composition Media radio systems, as well as the Discover Media navigation system.

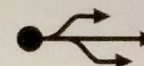


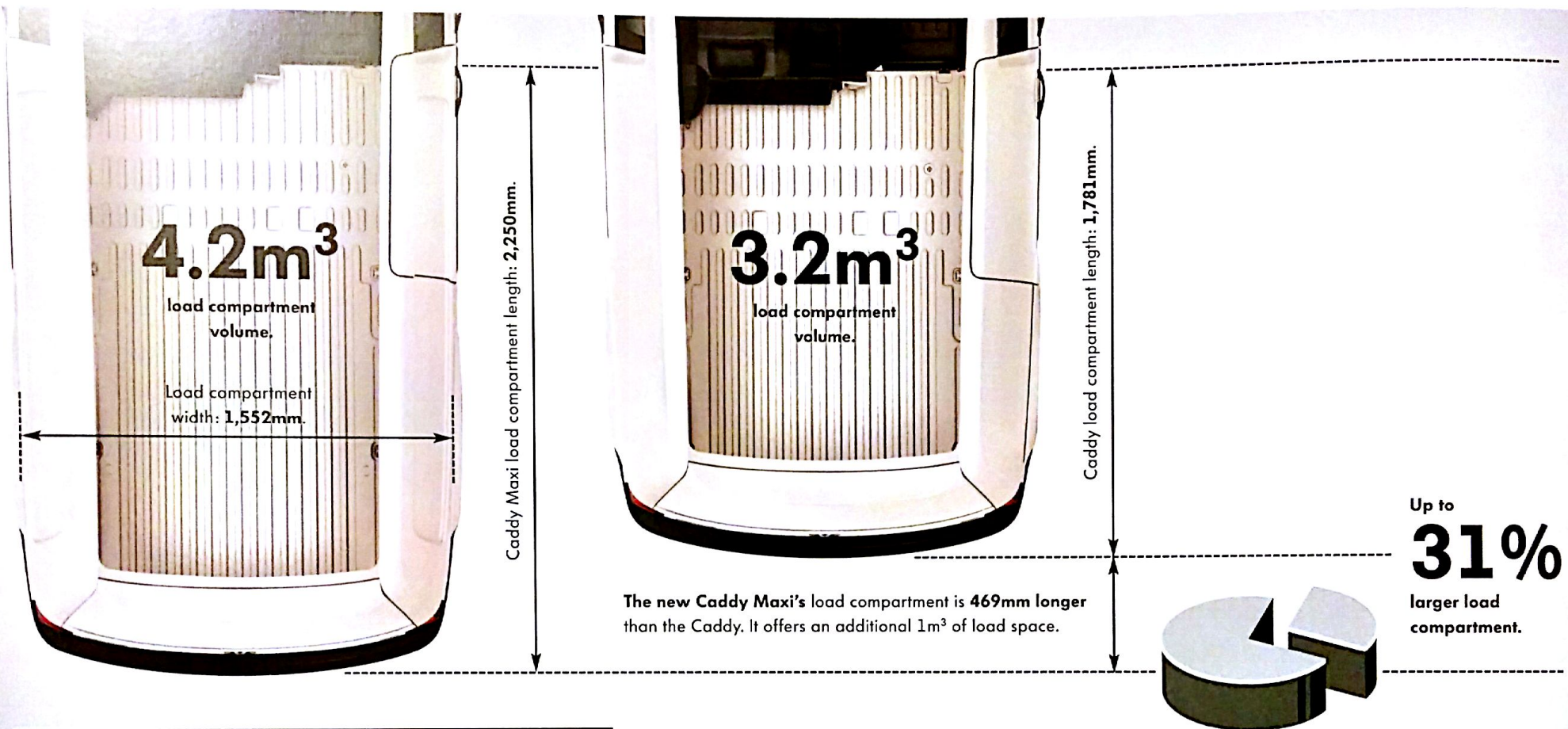
Voice recognition. The voice control system allows you to operate the telephone, navigation and audio functions without taking your hands off the steering wheel.

App-Connect. You can easily and safely operate special apps using this interface. It allows you to view and operate content and functions from your smartphone on the infotainment touchscreen.



Connectivity package. External media devices, such as MP3 players, can be connected via the USB port. Additionally, the mobile phone interface offers a Bluetooth® hands-free speaking system.





More robust. More versatile. More flexible. The new loading space.

Built to last, the compact new Caddy panel van provides a useful 3.2m³ load compartment. If you need more room, then the new Caddy Maxi's load volume increases to 4.2m³, while the length increases by 469mm. If you need to combine passenger and load carrying, then the new Caddy Maxi Kombi allows you to carry up to 5 passengers (including the driver), while still offering 1.6m³ of load space. With the rear seats removed, the Caddy Maxi Kombi's volume increases to 4.1m³ – only slightly less than the cavernous Caddy Maxi.

As you'd expect, we've ensured that payloads are generous and that load access is easy, with a low load bed, wide side sliding doors and a choice of either asymmetric rear doors or tailgate. Whichever Caddy you choose, all feature numerous load-lashing rings (up to eight on the Caddy Maxi) and a selection of bulkhead, flooring, side lining and load securing options – all helping to ensure your load arrives intact.

More powerful. More economical. More advanced.

The new engines.

TDI

In the new Caddy you can expect an economical generation of new engines. The new Caddy's optimised chassis is perfectly tailored to the needs of day-to-day work and when combined with any TDI engine, contributes to a dynamic driving experience.

Powerful, economical and advanced. Our TDI common-rail direct injection diesel engines offer various levels of performance and an abundance of torque for shifting heavy loads. Depending on your engine, you'll receive a 5 or 6-speed manual gearbox as standard.

**EURO
5**

1.6 litre 55kW (75HP)

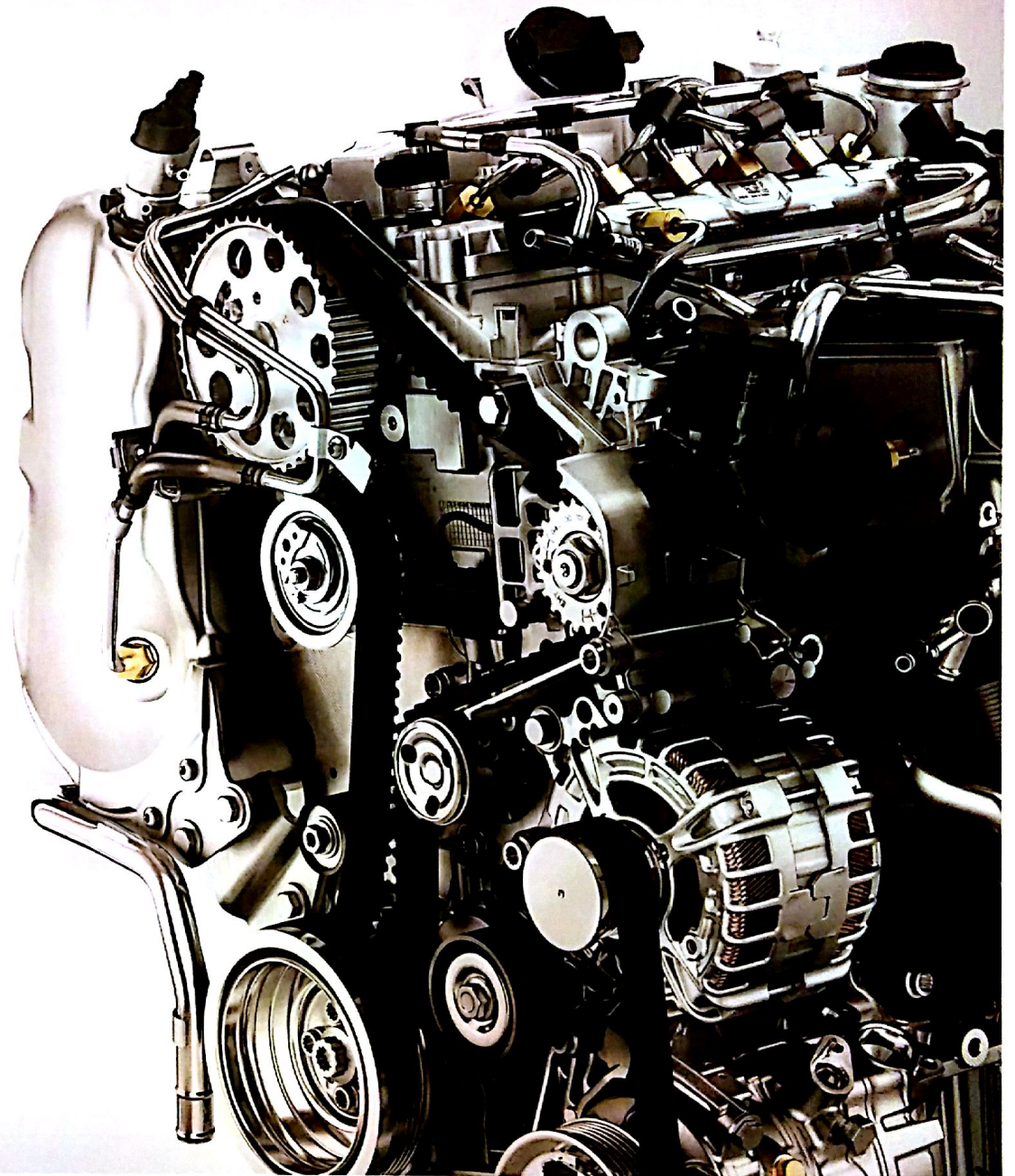
Average consumption: 5.6 l/100km.
CO₂ emissions: 149g/km.

2.0 litre 103kW (140HP)

Average consumption: 5.9 l/100km.
CO₂ emissions: 158g/km.

1.6 litre 75kW (102HP)

Average consumption: 5.6 l/100km.
CO₂ emissions: 149g/km.



More innovative. More intelligent. More convenient.

The new driver assistance and safety systems.

To help ensure every journey ends as stress-free as it begins, the new Caddy is equipped with a number of new safety systems – all of which are activated in critical situations as a preventative measure. Add to this a variety of innovative driver assistance systems and you'll discover the new Caddy offers the highest possible levels of safety and peace-of-mind.



Rear-view camera. Displays a clear view of the area behind the vehicle which aids parking. Available as an option, the rear-view camera is only available in combination with a tailgate.



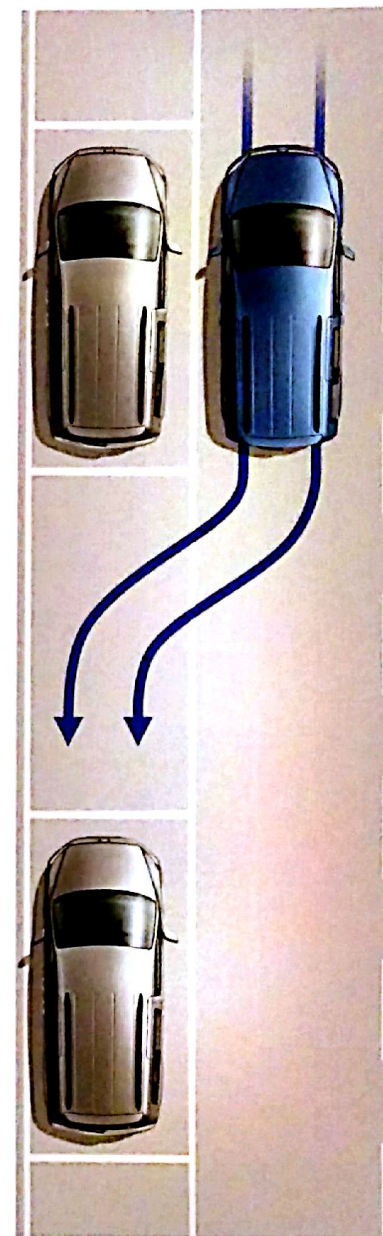
Driver Alert System. Registers deviation from normal steering patterns and uses visual and acoustic warnings to recommend that the driver takes a break. Standard on Trendline and Highline.



Brake Assist. Fitted as standard, the system registers the speed at which the brake pedal is pressed. During emergency braking, it ensures full brake pressure is applied more quickly.



Airbags. Driver and front passenger front and curtain airbags are standard for the first time. They offer occupants the best possible protection in the event of head-on or side impacts. When carrying small children, the front passenger airbag can be deactivated.



Park Assist.

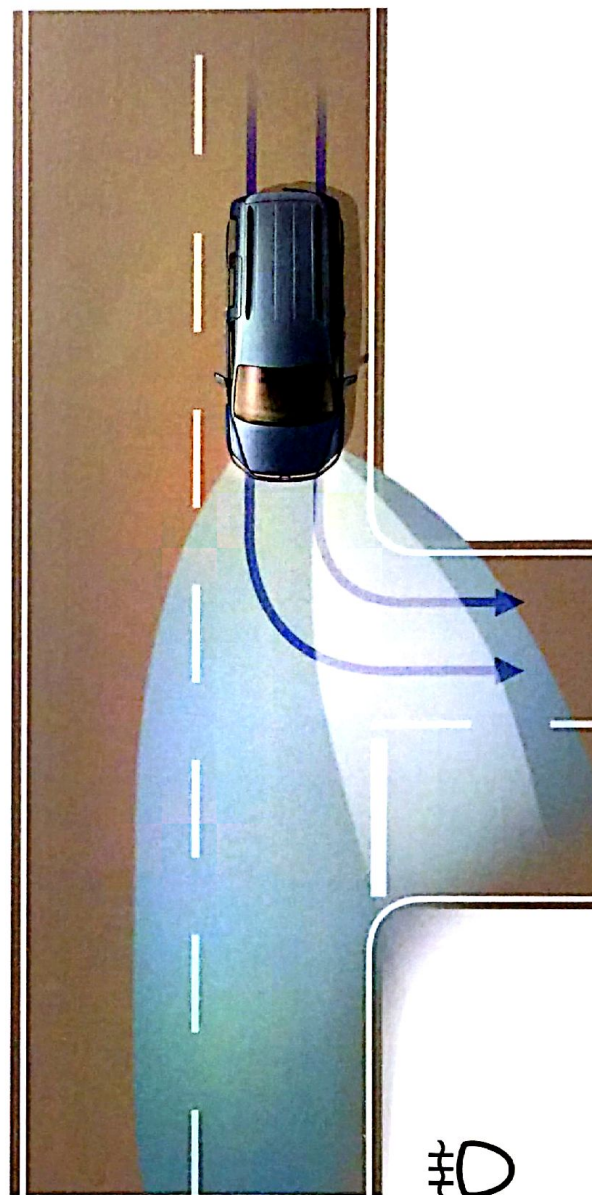
This useful option aids parking into parallel and bay spaces. When reverse is engaged, the vehicle assumes control of the steering. All that's required of the driver is operate the clutch, accelerator and brake pedals.

Doc



High Beam Assist.

Automatically dips the headlights and prevents dazzle for oncoming vehicles, or vehicles travelling ahead. At night time and at speeds of above 60km/h, the system automatically switches the headlights to high-beam.



Fog lights with integrated cornering lights.

Available as an option, these help to illuminate curves and bends in the road ahead where the vehicle is turning.

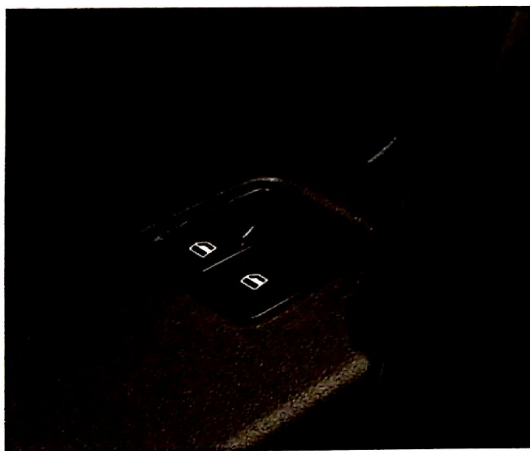
More flexible. More comfortable. More spacious.

The highlights.

Standard on all new Caddy models.

Standard equipment.

- Composition Colour radio system including AUX-IN, SD card slot, MP3 compatible CD player, USB input, two speakers and Bluetooth®.
- Driver and front passenger front and curtain airbags.
- Electric front windows.
- Electric heated and adjustable wing mirrors.
- Electric seatbelt tensioners.
- Lockable glovebox with illumination.
- Remote central locking.
- Seatbelt warning when not engaged.
- Steel wheels including centre caps.



Equipment in addition to Caddy.

Trendline.

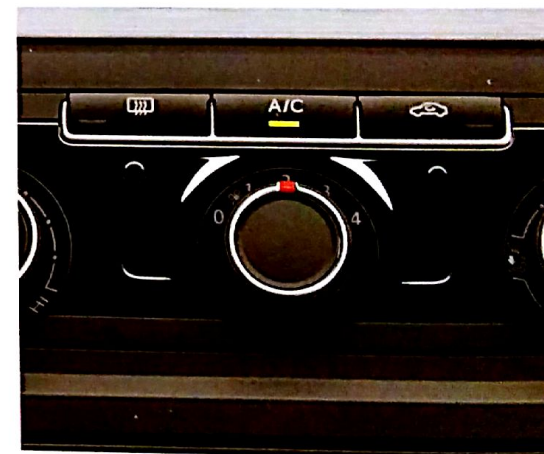
- Body-coloured bumpers, door mirrors, handles and protective side mouldings.
- Cruise control.
- Driver Alert System.
- Leather steering wheel, gearknob and gaiter.
- Multi-function display Plus.
- Rear parking sensors.
- Storage compartments under front driver and passenger seats.
- Stylish full size wheel trims.
- Twin sun visors with vanity mirrors.
- 8-way adjustability on driver's seat, including lumbar support.



Equipment in addition to Trendline.

Highline.

- 15" 'Caloundra' alloy wheels (75HP and 102HP).
- 16" 'Bendigo' alloy wheels (140HP).
- Climatic air conditioning.
- Composition Media radio system.
- Front fog lights.
- Heated windscreen.
- Leather multi-function steering wheel.
- Lockable wheel bolts.
- Visibility pack including auto-dimming rear-view mirror, rain sensors with automatic wipers and intermittent control.



Doc

New wheels.



'Caloundra' alloy wheels.
6J x 15 with 195/65 R15 tyres.



'Bendigo' alloy wheels.
6J x 16 with 205/55 R16 tyres.



'Rockhampton' alloy wheels.
6J x 17 with 205/50 R17 tyres.

Paint finishes and seat upholstery.

Solid paint finishes.

Candy White.
Solid paint.

Pure Grey.
Solid paint.

Cherry Red.
Solid paint.

Bright Orange.
Solid paint.

Pearl effect paint finishes.¹

Deep Black.
Pearl effect paint.

Metallic paint finishes.¹

Reflex Silver.
Metallic paint.

Indium Grey.
Metallic paint.

Mojave Beige.
Metallic paint.

Honey Orange.
Metallic paint.

Fontana Red.
Metallic paint.

Blackberry.
Metallic paint.

Chestnut Brown.
Metallic paint.

Viper Green.
Metallic paint.

Bamboo Garden Green.
Metallic paint.

Starlight Blue.
Metallic paint.

Acapulco Blue.
Metallic paint.

Seat upholstery.

Austin.
Titanium Black
Cloth upholstery.

Marathon.¹
Titanium Black
Strong cloth upholstery.

Mesh.¹
Titanium Black
Synthetic leather
upholstery.

¹ Available at extra cost.

The new Caddy

This brochure supersedes all previous publications.

Issue: September 2015

www.volkswagenvans.ie

Please note: The information and specifications contained within this brochure were correct at the time of printing and are for information purposes only. Some photographs illustrate pre-production vehicles and may show optional equipment or accessories. They may therefore vary in specification to final right-hand drive vehicles. Due to our continuous process of improvement, products are continually updated and changes may be made to the specifications from time to time. Please check with your authorised Volkswagen Commercial Vehicles retailer for current specifications on any vehicle before ordering. Print processes do not allow exact reproduction of the paint and upholstery colours.

Doc